

The VW Series of anchor winches are designed for traditional rope and chain combination anchor rodes, where manual transfer of the rode from the rope warping drum to the chainwheel is required



Features

- Provides the versatility of operating two anchors from one winch.
- Functional rope hauling from any direction using independent MAX-grip™ snag-free warping drum with clutch disengagement of chainwheel for positive control of all ropes.
- Permits use of traditional shackle and thimble rope and chain connection.
- Allows alternative mounting horizontally on a fore and aft bulkhead inside chain locker for below deck installation.
- High-quality finish on above deck components. Heavy chrome over marine-grade alloy bronze.
- Cone type brake/clutch mechanism permits manual 'free fall' anchoring. Cone clutches, unlike dog clutches, provide smooth progressive engagement ensuring safe operator control.
- Chainwheel locking pawl (except on VW500).
- Simplified through deck installation by modular design and precise alignment of gearbox to the topworks utilising marine-grade stainless steel bolts.
- Anodized aluminium gearbox and spacer on 500, 1000 and 1500 models. Marine-grade alloy gearbox housing, finished with a two coat paint system on 2200 and 3500 models.
- Heavy duty, dual direction motor, designed for marine winches.
- Easily disassembled for servicing.

SPECIFICATIONS

MODEL	500*	1000	1500	2200	3500
Maximum Pull	227kg 500lbs	455kg 1000lbs	680kg 1500lbs	1000kg 2200lbs	1590kg 3500lbs
Chain Short Link	6/7mm 1/4"	6-10mm 1/4" -3/8"	6-10mm 1/4" -3/8"	9-11mm 5/16"-3/8"	10-13mm 3/8"-1/2"
Line Speed** (Normal Working)	18m/min 59ft/min	18m/min 59ft/min	18m/min 59ft/min	15m/min 50ft/min	10m/min 33ft/min
Power Supply (DC)	12 or 24V	12 or 24V	12 or 24V	12 or 24V	12 or 24V
Motor (Watts)	600W	1000W	1200W	1200W	1200W
Net Weight (Electric)	10kg 22lbs	22kg 50lbs	22kg 50lbs	39kg 87lbs	48kg 105lbs
Hydraulic Pressure	N/A	100bar 1450psi	138bar 2000psi	135bar 1950psi	138bar 2000psi
Hydraulic Flow	N/A	20 l/min 5.3USgal/min	20 l/min 5.3USgal/min	36 l/min 9.5USgal/min	42 l/min 11USgal/min
Net Weight (Hyd)	N/A	15kg 34lbs	15kg 34lbs	33kg 72lbs	40kg 88lbs

* Available USA only.

** Winch performance when hauling rope with capstan. Chain speed may vary depending on size of chain and gypsy.

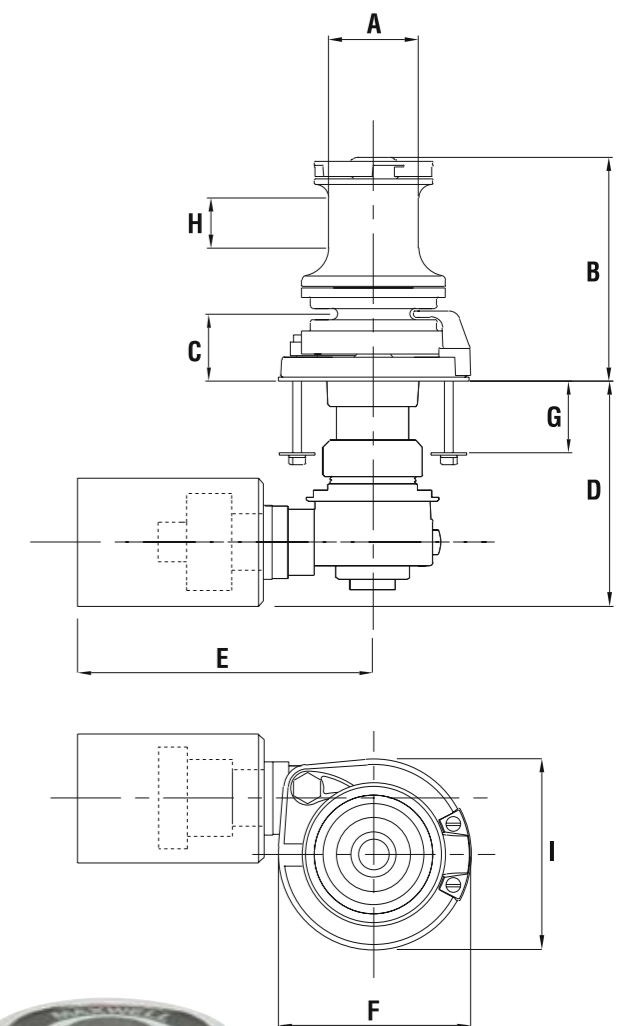
DIMENSIONS

MODEL	500	1000	1500	2200	3500
A	65mm 2 9/16"	80mm 3 1/8"	80mm 3 1/8"	94mm 3 11/16"	110mm 4 5/16"
B	151mm 6"	198mm 7 3/4"	198mm 7 3/4"	251mm 9 15/16"	276mm 10 7/8"
C	40mm 1 5/8"	59mm 2 3/8"	59mm 2 3/8"	80mm 3 5/32"	83mm 3 9/32"
D	173mm 6 7/8"	252mm 9 15/16"	252mm 9 15/16"	290mm 11 13/32"	290mm 11 13/32"
E	244mm 9 5/8"	272mm 10 23/32"	272mm 10 23/32"	185mm 7 9/32"	185mm 7 9/32"
F	133mm 5 1/4"	165mm 6 1/2"	165mm 6 1/2"	190mm 7 1/2"	270mm 10 5/8"
G (Std deck clearance)**	57mm 2 1/4"	100mm 4"	100mm 4"	100mm 4"	100mm 4"
G (Extra deck clearance) ^	N/A	150mm 6"	150mm 6"	200mm 8"	200mm 8"
H (Working height of drum for rope warping)	37.5mm 1 1/2"	44mm 1 3/4"	44mm 1 3/4"	33mm 1 5/16"	54mm 2 1/8"
I	133mm 5 1/4"	165mm 6 1/2"	165mm 6 1/2"	194mm 7 5/8"	270mm 10 5/8"

**For VW1000 and VW1500 shorter deck clearance version also available at 50mm (2")

^ A deck clearance increase will also increase the 'D' measurement by the same increment.

***Important:** Maxwell winlasses must be used in conjunction with a chain stopper and/or alternative snubbing device to take the load off the winlass while laying at anchor. The chain stopper and alternative snubbing system should also be used to secure the anchor in the fully raised position while under way.



Wide Mouth Chain Pipe for use with a VW Series windlass to feed the rope and chain below deck. Wide Mouth Chain Pipes are designed to easily allow the eye splice and shackle to pass through. Maximum chain size is 10mm (3/8")

STANDARD EQUIPMENT REQUIRED FOR SINGLE DIRECTION CONTROL

- Circuit breaker/isolator panel (supplied with DC units only)
- Foot Switches (supplied with DC units only)
- Chainwheel to suit chain sizes specified
- Emergency crank handle and clutch control lever (except on VW500)

OPTIONS

- Additional foot Switches
- Traditional bronze finish
- Dual direction solenoid pack
- Chain Stopper*
- Chain Snubber
- Wide Mouth Chain Pipe
- Up/Down remote control panel
- Extra deck clearance kit
- AutoAnchor™ Equipment
- Hydraulic motor (except on 500)